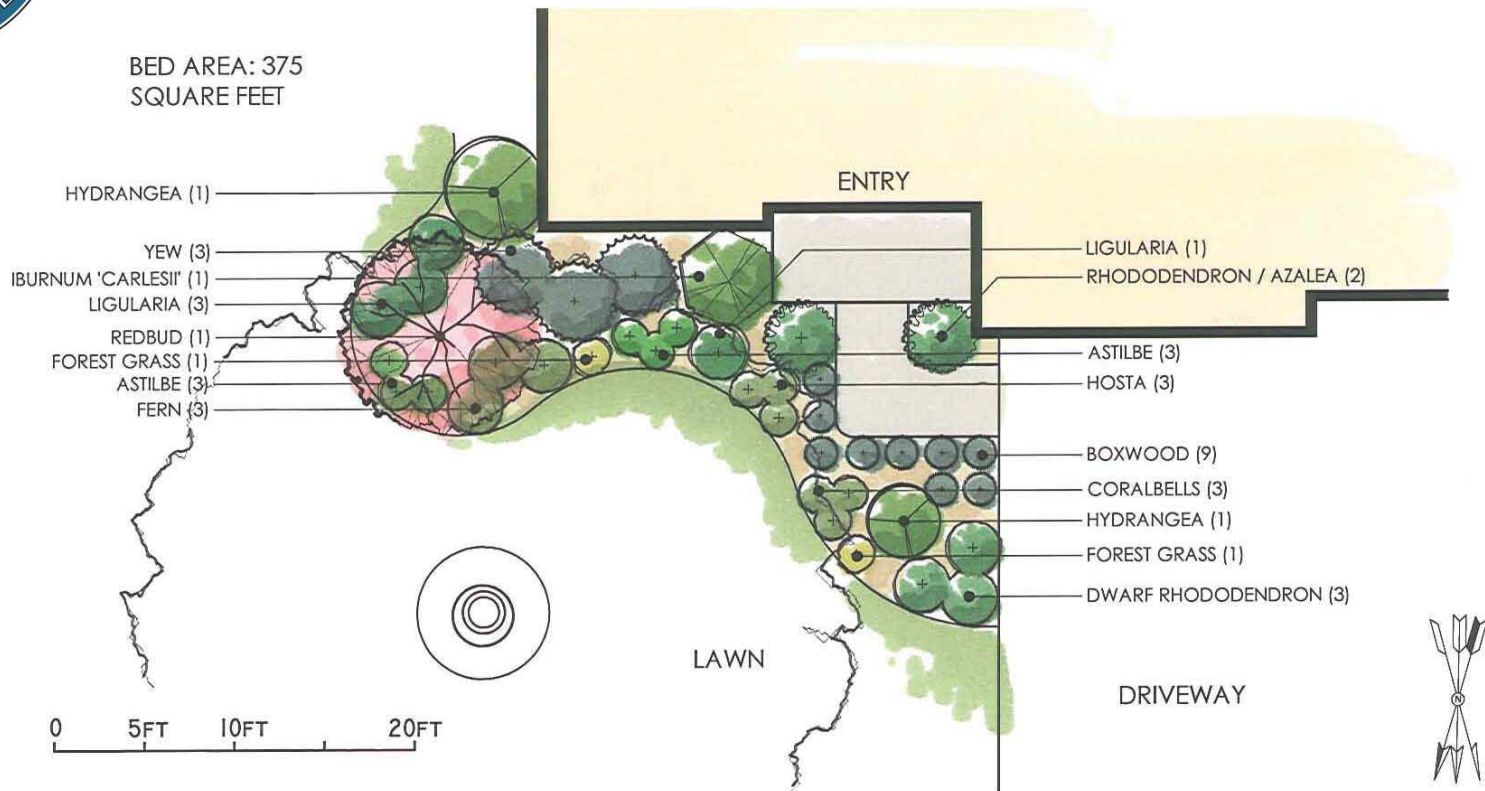




# SHADE FOUNDATION PLANTING

WWW.TEDLAREDESIGNBUILD.COM



THE ABOVE PLAN IS ONE EXAMPLE OF A SHADE FOUNDATION GARDEN, ASSUMING MODERATE TO LIGHT SUN EXPOSURE IN MOIST WELL DRAINED SOIL. ALTHOUGH THE ABOVE PLANTS ARE SUITABLE FOR MOST SHADE CONDITIONS, SOIL TYPE AND SPECIFIC PROPERTY ATTRIBUTES MAY VARY, REQUIRING DIFFERENT PLANTS AND PREPARATIONS. PLEASE CONSULT OUR GARDEN CENTER STAFF WITH ANY QUESTIONS YOU MAY HAVE.