

SHRUB & TREE TRIMMING

Why Prune?

Pruning allows for undesirable or diseased parts of the plant to be removed. Pruning can also help to encourage the growth and development of a plant.

When to Prune?

It depends on the plant. For deciduous shrubs and trees that bloom in the spring (Lilacs) prune these plants after they flower. Prune deciduous trees that flower in the summer or fall in the late fall or early spring while they are still dormant. Evergreens should be pruned after they have finished putting on new growth in the spring, typically pruning should occur in June or July.

What are the proper pruning tools?

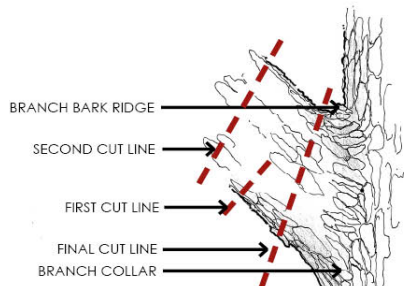
In order to properly prune a shrub or a tree it is necessary to have the proper tools to do the job. The type of tools you will need will depend on what you will be pruning.

- **Bypass or Anvil Pruners** are good for trimming plants up to 1" in diameter.
- **Loppers** work well for pruning anything up to 2" in diameter.
- **Hedge Shears** are necessary for trimming hedges or other small parts of a shrubs or ever greens. Hedge shears should be lightweight yet strong and the blade should be kept sharp.
- **Pole Pruners** are used for pruning branches out of reach and 1" or less in diameter.
- **Pole Saws** are used for pruning branches that are out of reach and larger than 1" in diameter.
- **Hand Saws** may be used to remove even larger branches.
- **Chain Saws** may be used but only as a last resort and with extreme caution.

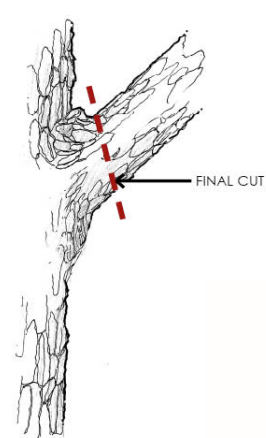
How to prune a shrub or a tree

- Prune just outside of the branch collar. (See diagram)
- 3 cuts are needed for larger branches (See diagram)
- Remove crossing branches, water sprouts, branches with bad angles, & hanging branches.
- Always keep 1/3 of the height of the tree in the trunk and 2/3 of the tree with foliage in the top.
- When trimming small branches keep buds to the outside of the branch.

CUTTING A LARGE BRANCH

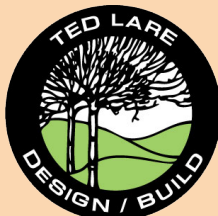


CUTTING A SMALL BRANCH



PROPER TREE TRIMMING

TED LARE DESIGN BUILD
2701 CUMMING AVE
CUMMING, IA 50061
OFFICE 981-1073
FAX 981-1074



TED'S GARDEN CENTER
www.tedsgarden.com
PHONE 981-1075